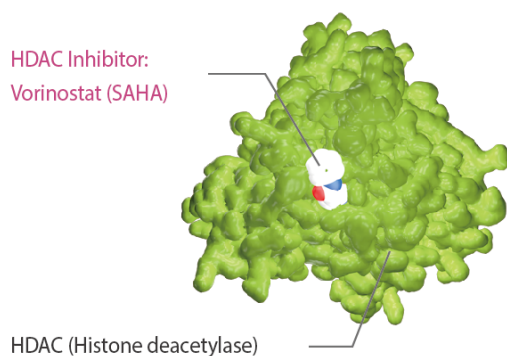


Beta-secretase

BACE; β -Secretase



Beta-secretase (BACE) is an aspartic-acid protease important in the formation of myelin sheaths in peripheral nerve cells. The transmembrane protein contains two active site aspartate residues in its extracellular protein domain and may function as a dimer. Alzheimer's disease (AD) is caused by aggregates of the amyloid peptide (A β), which is generated by cleavage of the A β protein precursor (APP) by beta-secretase (BACE-1) followed by gamma-secretase. BACE-1 cleavage is limiting for the production of A β , Drugs to block this enzyme (BACE inhibitors) prevent the build up of beta-amyloid and may help slow or stop Alzheimers disease.

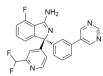
Beta-secretase Inhibitors & Modulators

AZD3839 free base

Cat. No.: HY-13438

Bioactivity: AZD3839 (free base) is a potent and selective BACE1 inhibitor with IC₅₀ of 23.6 uM, about 14-fold selectivity over BACE2, also a β-secretase enzyme inhibitor.

Purity: 99.99%
Clinical Data: Phase 1
Size: 10mM x 1mL in DMSO,
 5 mg, 10 mg, 25 mg, 50 mg

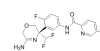


BACE-1 inhibitor 1

Cat. No.: HY-112297

Bioactivity: BACE-1 inhibitor 1 (Compound 8a) is a potent **BACE-1** inhibitor with an IC₅₀ of 56 nM [1].

Purity: >98%
Clinical Data: No Development Reported
Size: 250 mg, 500 mg, 100 mg



BACE-IN-1

Cat. No.: HY-U00287

Bioactivity: BACE-IN-1 (Compound 13) is a substituted Imidazo[1,2-a]pyridine derivative which can inhibit β-site amyloid precursor protein-cleaving enzyme (BACE) and that may be useful in the treatment of diseases in which BACE is involved, such as Alzheimer's disease.

Purity: >98%
Clinical Data: No Development Reported
Size: 1 mg, 5 mg, 10 mg, 20 mg

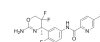


BACE1-IN-1

Cat. No.: HY-100182

Bioactivity: BACE1-IN-1 is a potent and highly brain penetrant **BACE1** inhibitor with IC₅₀s of 32 and 47 nM for human BACE1 and BACE2, respectively.

Purity: >98%
Clinical Data: No Development Reported
Size: 1 mg, 5 mg, 10 mg

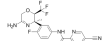


BACE1-IN-2

Cat. No.: HY-112444

Bioactivity: BACE1-IN-2 is a 1,4-Oxazine β-Secretase 1 (**BACE1**) inhibitor with an IC₅₀ of 22 nM [1].

Purity: >98%
Clinical Data: No Development Reported
Size: 500 mg, 250 mg

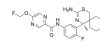


BACE1-IN-4

Cat. No.: HY-128594

Bioactivity: BACE1-IN-4 is a potent and highly selective **BACE1** inhibitor, with an IC₅₀ of 3.8 nM and a K_i of 1.9 nM, more selective at BACE1 over BACE2. Anti-Alzheimer's disease [1].

Purity: >98%
Clinical Data: No Development Reported
Size: 500 mg, 250 mg, 100 mg



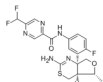
Elenbecestat

(E2609)

Cat. No.: HY-109055

Bioactivity: Elenbecestat (E2609) is a novel potent **BACE-1** inhibitor for the treatment of Alzheimer's disease (AD) [1].

Purity: >98%
Clinical Data: No Development Reported
Size: 250 mg, 500 mg

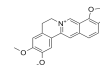


Epiberberine

Cat. No.: HY-N0226

Bioactivity: Epiberberine is an alkaloid isolated from Coptis chinensis, acts as a potent **AChE** and **BChE** inhibitor, and a non-competitive **BACE1** inhibitor, with IC₅₀s of 1.07, 6.03 and 8.55 μM, respectively. Epiberberine has antioxidant activity, w...

Purity: >98%
Clinical Data: No Development Reported
Size: 5 mg, 10 mg, 50 mg

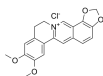


Epiberberine chloride

Cat. No.: HY-N0226A

Bioactivity: Epiberberine chloride is an alkaloid isolated from Coptis chinensis, acts as a potent **AChE** and **BChE** inhibitor, and a non-competitive **BACE1** inhibitor, with IC₅₀s of 1.07, 6.03 and 8.55 μM, respectively. Epiberberine chloride has antioxidant...

Purity: 99.60%
Clinical Data: No Development Reported
Size: 10mM x 1mL in DMSO,
 5 mg, 10 mg



Eslicarbazepine acetate

(BIA 2-093)

Cat. No.: HY-B0703

Bioactivity: Eslicarbazepine acetate, an antiepileptic drug, is a dual dual Inhibitor of **β-Secretase** and voltage-gated **sodium channel**.

Purity: 99.98%
Clinical Data: Launched
Size: 10mM x 1mL in DMSO,
 10 mg, 50 mg, 100 mg, 500 mg

