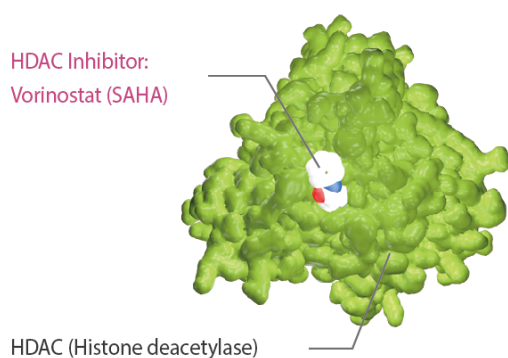


# CRM1

Chromosomal Maintenance 1;Exportin 1;XPO1



Chromosome maintenance protein 1 (CRM1) is a nuclear export receptor involved in the active transport of tumor suppressors (eg, p53 and nucleophosmin) whose function is altered in cancer because of increased expression and overactive transport. Blocking CRM1-mediated nuclear export of such proteins is a novel therapeutic strategy to restore tumor suppressor function. Orally bioavailable selective inhibitors of nuclear export (SINE) that irreversibly bind to CRM1 and block the function of this protein have been recently developed.

CRM1 is the sole exporter of many tumor-suppressor proteins (TSPs), and functions as a proto-oncogene by transporting these tumor suppressors from the nucleus, where they are active, to the cytoplasm, where their activity is abrogated.

## CRM1 Inhibitors & Modulators

### CBS9106

(SL-801)

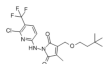
Cat. No.: HY-108716

**Bioactivity:** CBS9106 (SL-801) is a reversible oral **CRM1** inhibitor with CRM1 degrading and antitumor activities <sup>[1]</sup>.

**Purity:** >98%

**Clinical Data:** No Development Reported

**Size:** 5 mg, 10 mg, 50 mg, 100 mg



### Eltanexor Z-isomer

(KPT-8602 (Z-isomer))

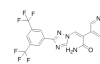
Cat. No.: HY-100423A

**Bioactivity:** Eltanexor Z-isomer (KPT-8602 Z-isomer) is the less active isomer of KPT-8602. KPT-8602 is a potent **CRM1** inhibitor. IC50 In Vitro: Eltanexor Z-isomer exhibits different inhibitory effects on Z138, MM15, 3T3 cell lines, with IC<sub>50</sub>

**Purity:** 95.80%

**Clinical Data:** No Development Reported

**Size:** 10mM x 1mL in DMSO,  
1 mg, 5 mg, 10 mg, 50 mg



### Leptomycin B

(CI 940; LMB)

Cat. No.: HY-16909

**Bioactivity:** Leptomycin B (CI 940; LMB) is a potent inhibitor of the nuclear export of proteins. Leptomycin B inactivates **CRM1/exportin 1** by covalent modification at a cysteine residue. Leptomycin B is a potent antifungal antibiotic blocking the eukaryotic cell cycle <sup>[1]</sup>.

**Purity:** 98.0%

**Clinical Data:** No Development Reported

**Size:** 0.046 mM \* 200 uL in Ethanol ,

